



COUNTER TERRORISM POLICING

ACT for YOUTH: Action Counters Terrorism

Helpful Advice

This quick-check leaflet is here to help you remember the key messages from the *Story of Nur, Edih and Llet*:

- How to identify & report suspicious behaviour
- How to identify & report a suspicious item
- What to do in a gun or knife terror attack

IDENTIFYING SUSPICIOUS BEHAVIOUR

Suspicious behaviour means any action that makes someone feel worried or anxious

Remember to focus on a person's behaviour, not their appearance

Suspicious behaviour might include:

- Hanging around in an area the public are not allowed to enter
- Paying too much attention to things like: entrances, exits, CCTV or security staff, or taking photos of these
- Trying to hide their face or identity
- Asking unusual questions, for example about security arrangements in a public place
- Deliberately trying to avoid security staff
- What the person is doing doesn't seem right for the place they're in
- Trust your instincts, if you see anything suspicious, take action!



REPORTING SUSPICIOUS BEHAVIOUR

When reporting suspicious behaviour, either find a responsible adult, call 999 and ask for police, or use the online reporting tool:

<https://www.met.police.uk/tell-us-about/possible-terrorist-activity/>

Reporting might include:

- Who did you see, what did they look like, what were they wearing?
- What have you seen, what has happened, what was it that made you suspicious?
- Where did the situation happen and where were you?
- When did it happen – what time?

Don't be afraid and don't worry about over-reacting. Your actions could help avert an attack and save lives.



IDENTIFYING SUSPICIOUS ITEMS

A suspicious item is any object that makes a person feel worried or anxious.

Some features of suspicious items might be:

Hidden:

- Has the item been hidden?
- Has any attempt been made to hide the item from view or place it where it probably wouldn't be found accidentally?
- Innocent items are not usually hidden deliberately!

Obvious:

- Is the item obviously suspicious?
- Can wiring or batteries be seen?
- Is it taped or does it contain liquids or powders?
- Has it been found after seeing someone behave suspiciously?

Typical:

- Is the item typical of what you might reasonably expect to find in that place?



RESPONDING TO SUSPICIOUS ITEMS

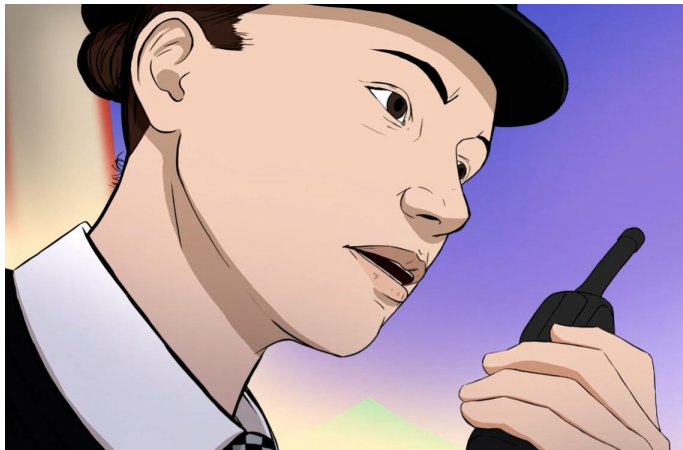
If you see anything that you think is suspicious, report it right away.

Different ways to report a suspicious item:

- Speak to a responsible adult or security staff
- Move to a safe distance and call the police on 999
- Use the online reporting tool
<https://www.met.police.uk/tell-us-about/possible-terrorist-activity/>

DO NOT:

- Ignore the suspicious item
- Move closer to look at it or pick it up
- Try to take charge of the situation yourself



WHAT TO DO IN A GUN OR KNIFE TERROR ATTACK



RUN

- If you are caught up in a gun or knife attack, RUN to safety
- Don't waste time taking photos or videos
- Tell others to go with you
- Don't let anyone or anything slow you down
- Just RUN to safety, this is your best option



HIDE

- If you can't run, HIDE
- Lock yourself in a room, with solid walls if possible
- Keep away from windows and doors
- Be very quiet, silence your phone
- Stay hidden until you are rescued, this may take some time



TELL

- Only when you are safe, phone 999 and ask for the police
- Tell them what has happened, who you are and where you are
- Answer all their questions as best you can