

NPCC Artificial Intelligence Portfolio – Police.AI

Supporting Policing to deliver AI technologies responsibly

Director Alex Murray

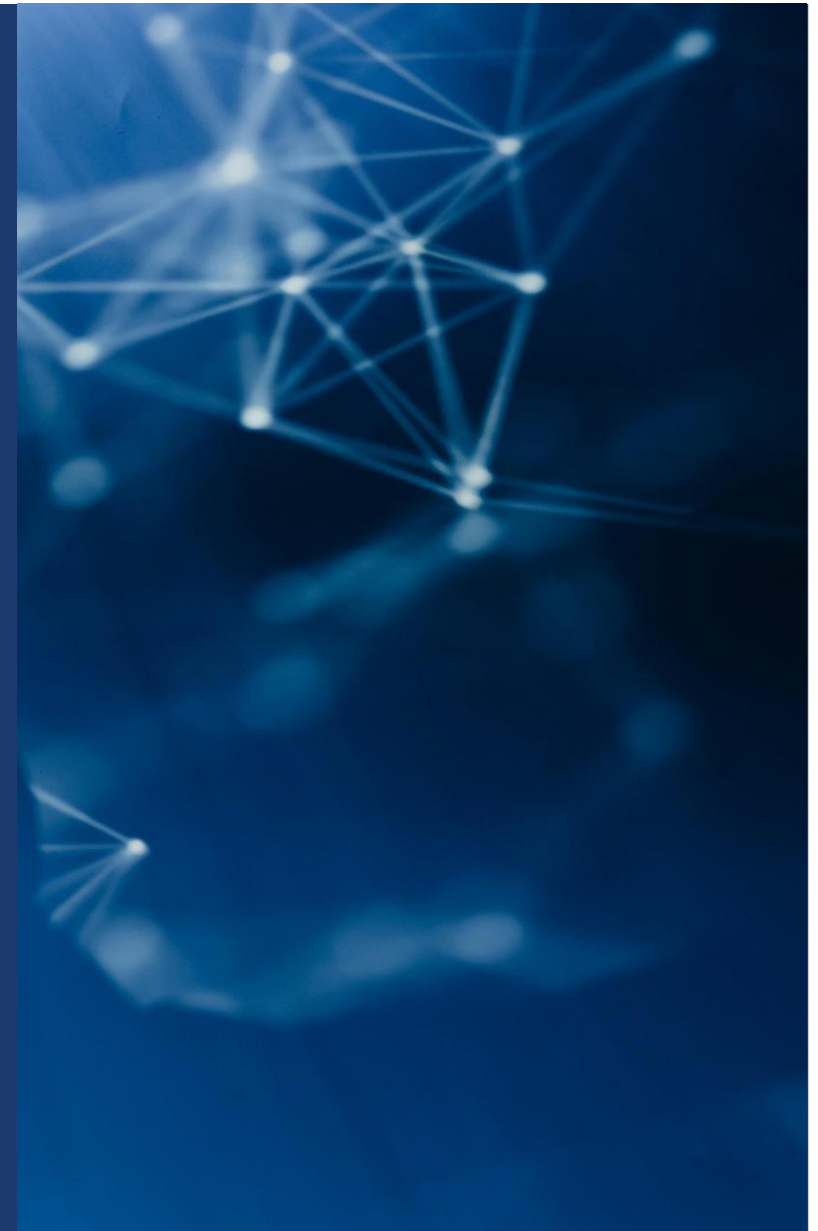


“To establish policing as a leader in applied responsible AI. Deploying well designed, rigorously tested and evidence-based AI will make policing more effective, improve public engagement, and increase police productivity”

NPCC AI Strategy

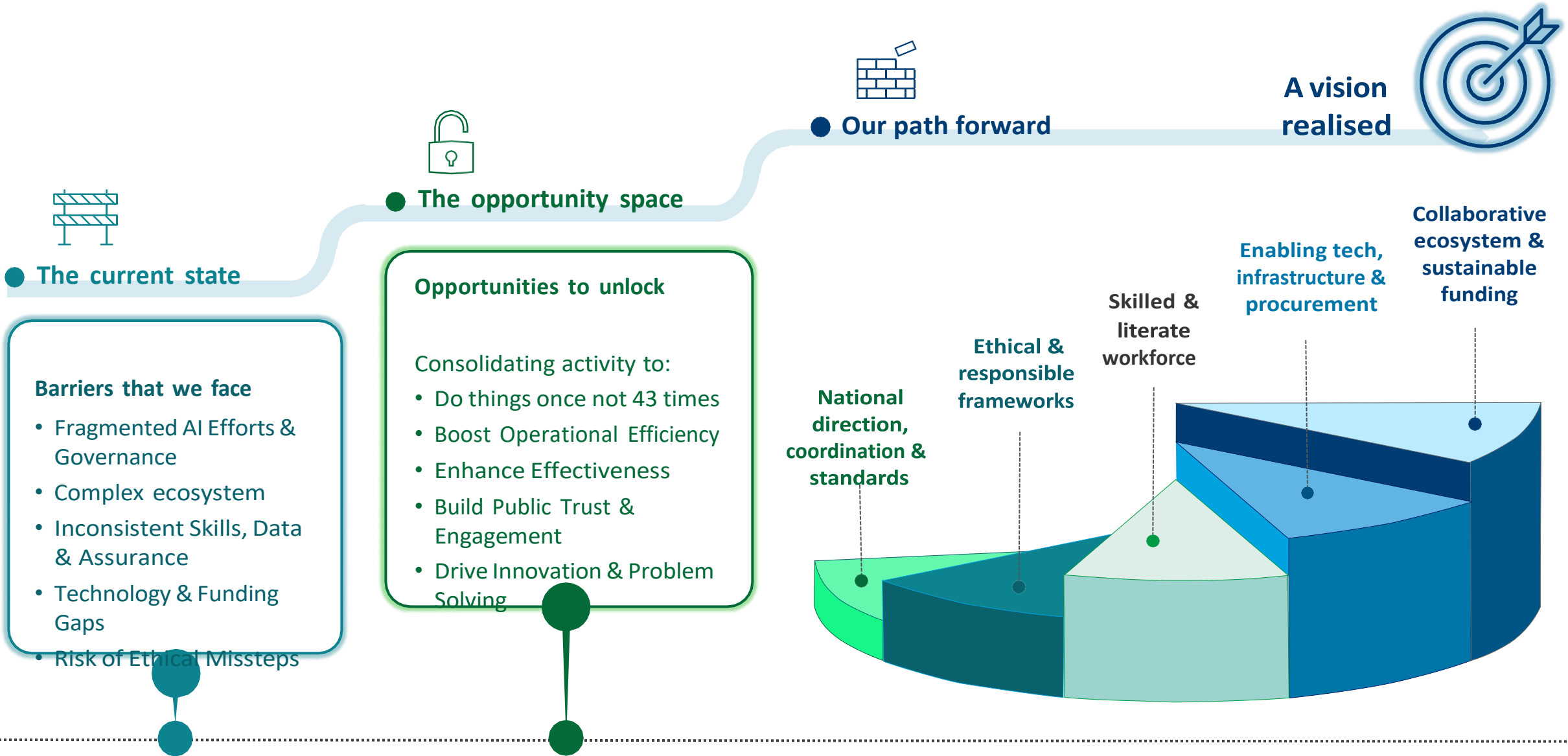
Purpose of today:

- To brief National Chief’s Council on Police.AI, considering the **case for change**, the **mission & objectives**, **how Police.AI will deliver** and what the **priorities are in year one**
- To set out how we will engage and consult with you to shape how Police.AI delivers for and with policing
- To provide the opportunity for questions



The Future of AI in Policing: A Case for Change

Navigating current realities, seizing future potential, and building a responsible foundation for AI adoption



OFFICIAL

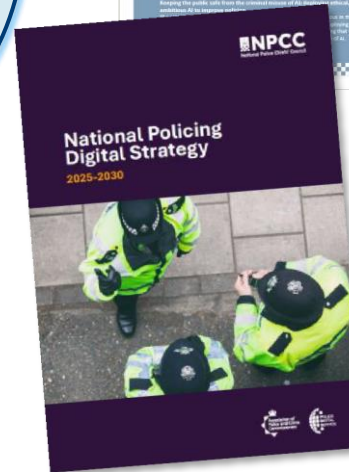
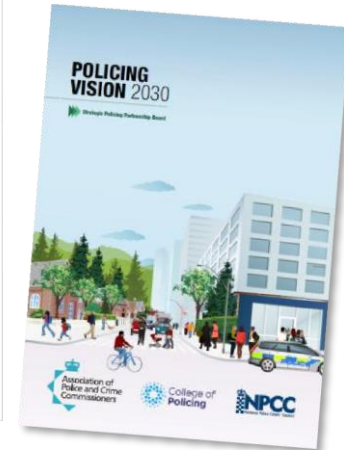
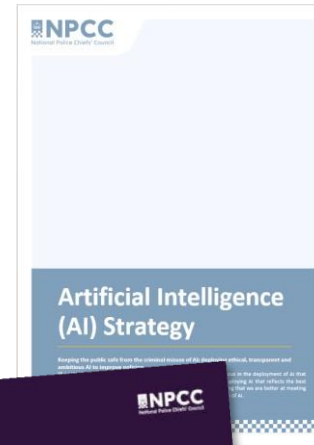
Positioning AI in the Wider Policing & Government Landscape

Ensuring cohesion and maximising impact across key national priorities

Government Policy & Ministerial Objectives



National Policing Strategy



Police.AI: An Integrated Approach to Delivering Responsible AI

AI Lab

AI development & testing capability

Testing AI models / tools

- Synthetic data / sandbox capability
- Market benchmarking, testing and assurance pre-deployment
- Post-deployment process and impact evaluations

Building AI models / tools

Building AI models / tools

- Focused on quality, not quantity and done by exception
- Adjusting AI models to work for policing (tuning, UX, prompts etc.)

AI enablement

Support forces to adopt AI responsibly

Procurement and Funding

- Subsidise testing, development and rollout of AI across police forces
- Work with BLC to create and maintain national procurement frameworks.
- Sending a demand signal to industry on policing's AI needs

Enabling local capability

- Supporting with business change and adoption
- Nurturing self-sustaining AI teams within forces
- Commissioning training

Knowledge Hub

- Develop and maintain guidance documents
- AI policing community engagement and knowledge sharing
- First port of call for advice on AI adoption
- Academic engagement

Strategic Oversight

Strategic direction, oversight & coordination

Strategic oversight

- Build and maintain a register of all activity on AI within policing
- Prioritising Police.AI's activities and pipeline
- Centre of expertise for criminal misuse of AI

Wider Engagement

- Advice to government on AI legislation and regulation
- Links to other AI labs across the public sector
- Explaining AI in policing to the public



**Improve Public
Safety**

**Maximise Cross-System
Investment**

**Drive Operational
Efficiency**

**Promote Responsible
use of AI**

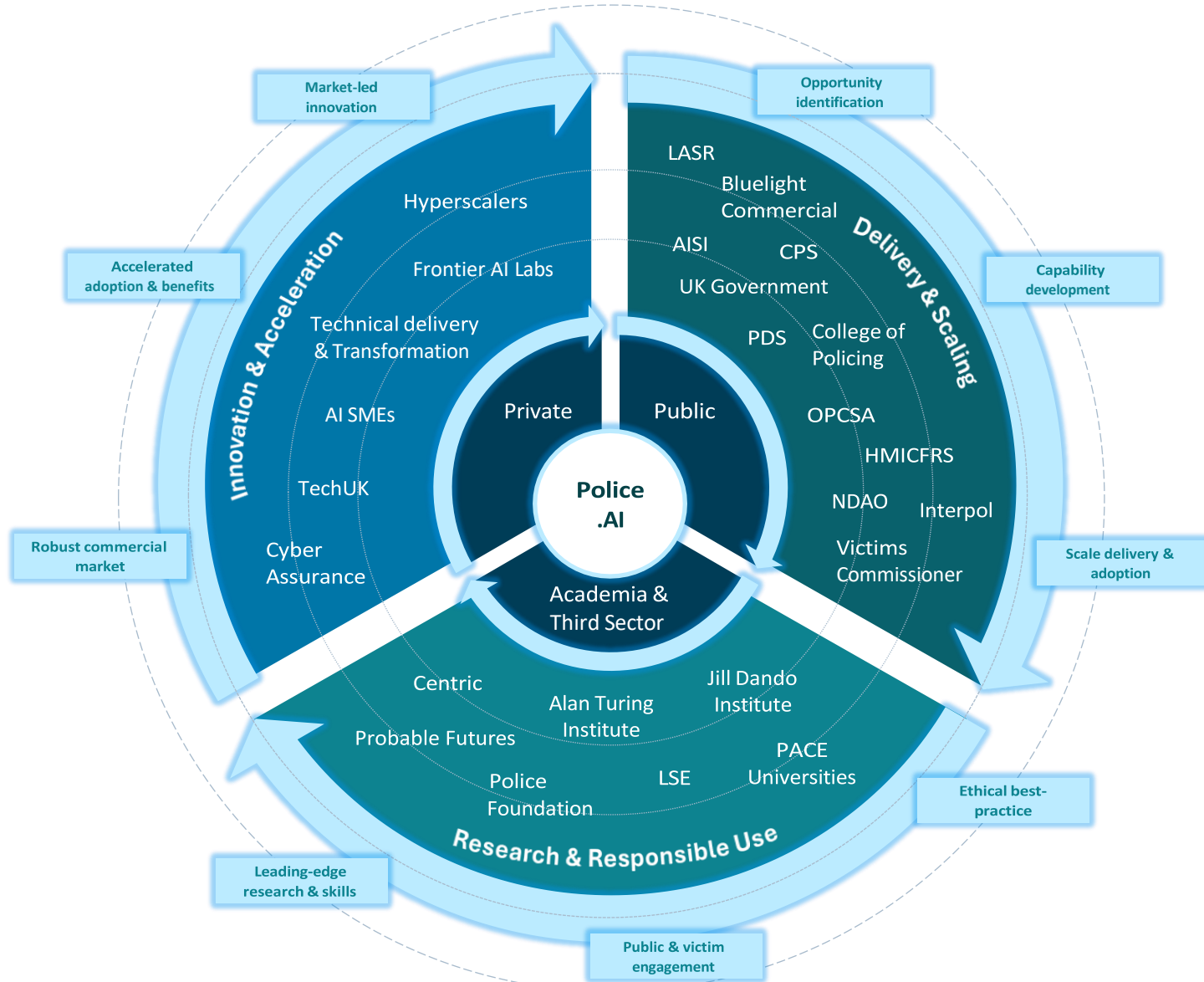
**Support the
workforce**

Police.AI: A Partnership for System-wide AI Advancement

Working seamlessly with forces, national and international bodies to amplify impact and avoid duplication

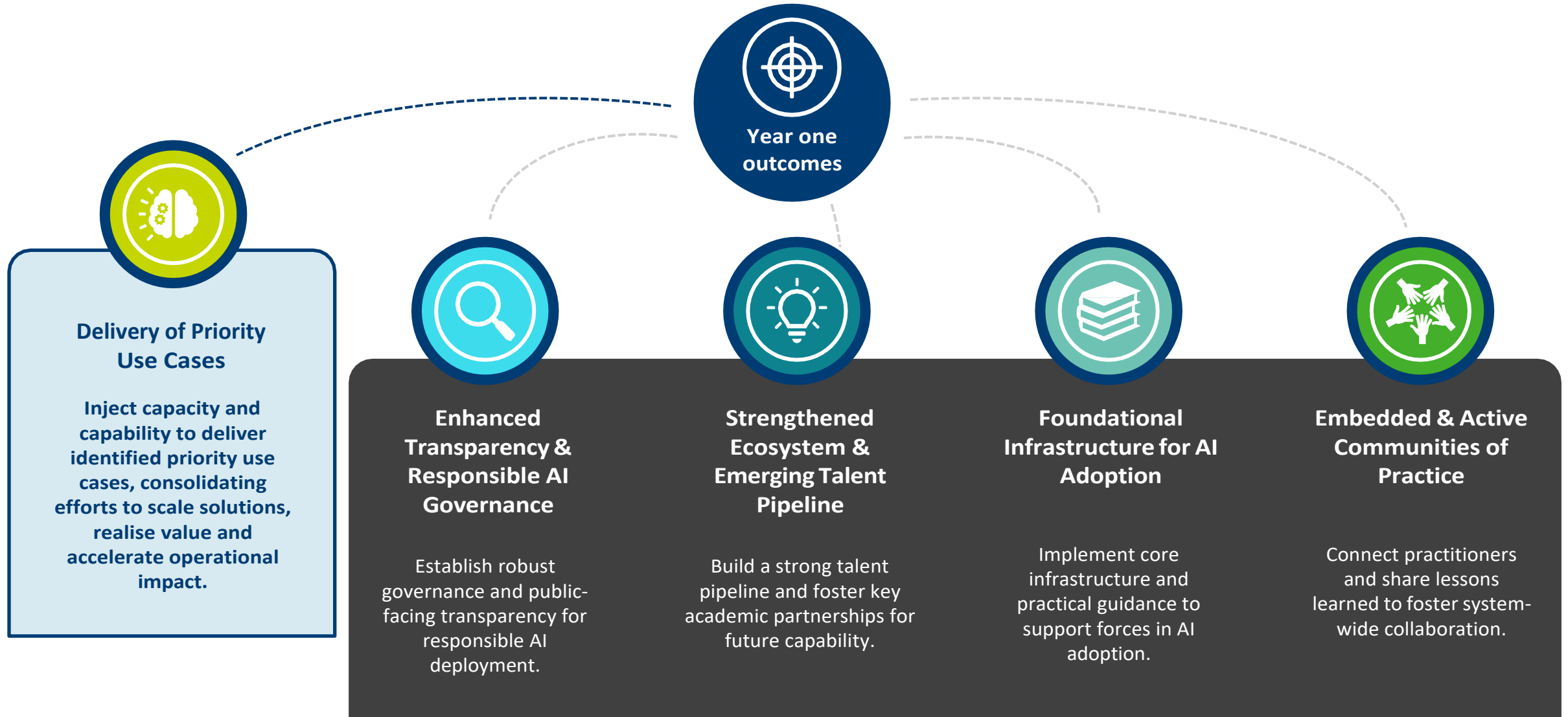
This diagram illustrates Police.AI's integrated role within a diverse ecosystem of public, private, and academic and third sector partners, across the UK and internationally.

Effective management of this ecosystem is essential for successful AI adoption and collaborative advancement across policing.



Year One Priorities: Laying the Foundation for Responsible AI

Establishing critical capabilities and applying them to priority use cases for immediate impact

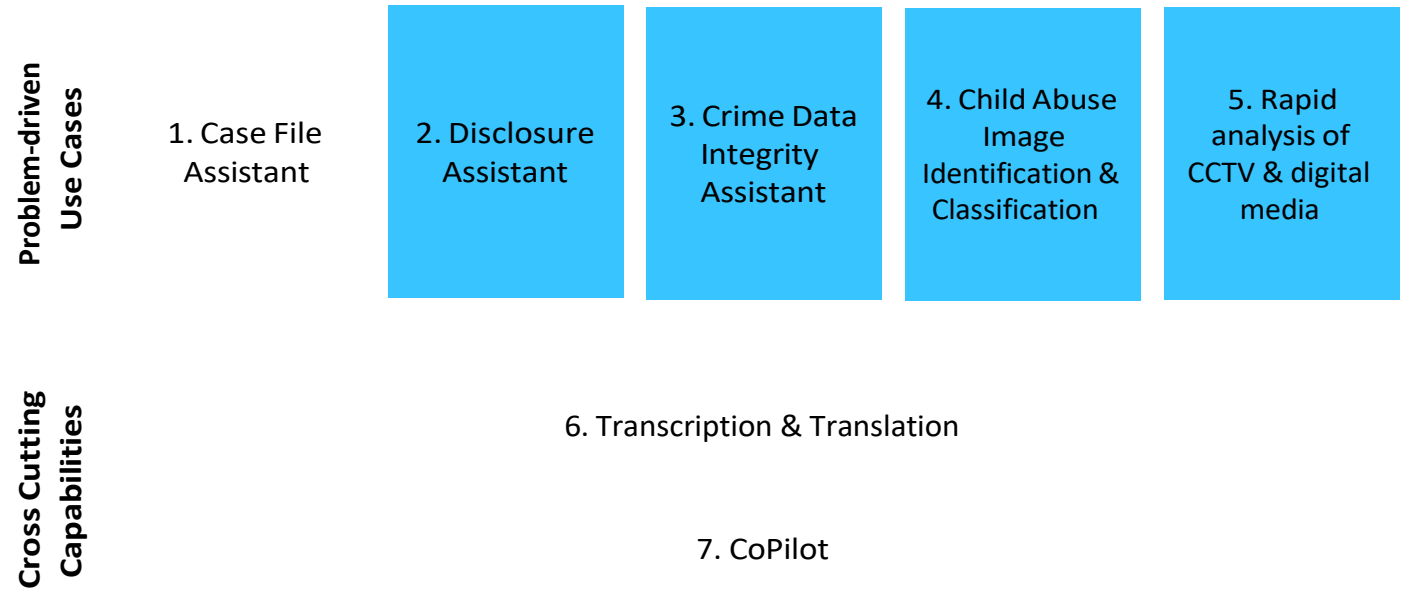


Police.AI in Action: Year One Priority Use Cases

Applying foundational capabilities to deliver immediate, impactful outcomes across key challenges

Use case prioritisation

The use cases prioritised as 'deliver' will be the focus of year one



Use case backlog

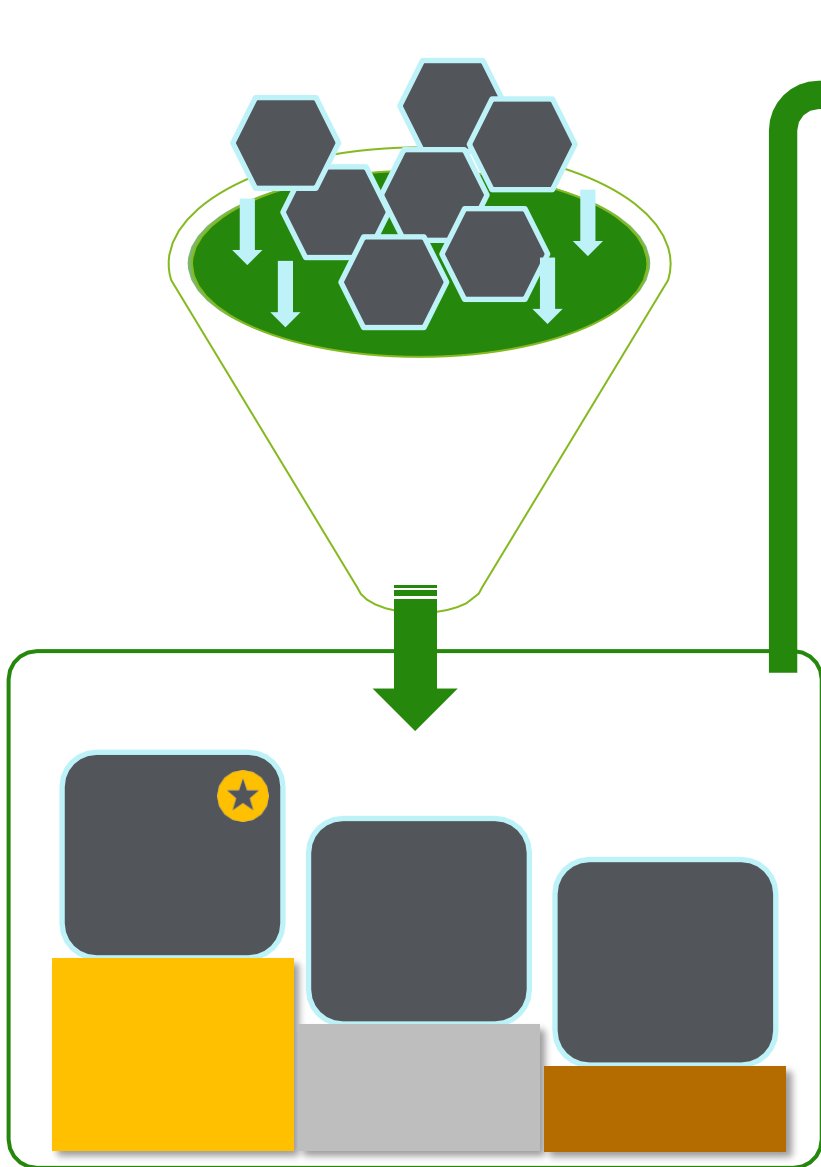
Year one delivery approach:

*To enable adoption and scaling that is **de-risked**,*

- Agile project management
- Senior sponsors
- Product owners

accelerated and consistent.

➤ Forward-deploy capability into forces



Police.AI: System Roles Across the AI Solution Lifecycle

Shaping the AI solution journey in partnership through the Engage, Evolve, and Embed innovation phases

Key system partners will play a critical role.

The phases where they are likely to interact and support the most are indicated on the solution lifecycle.

Engage



Evolve



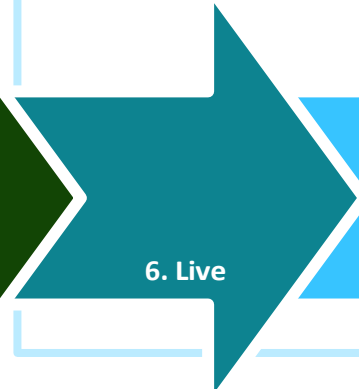
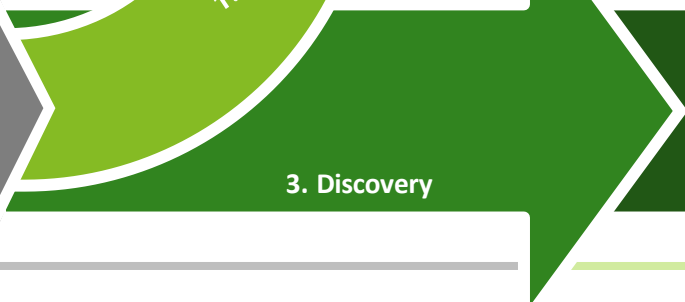
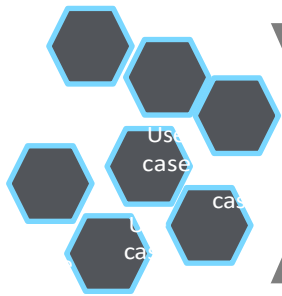
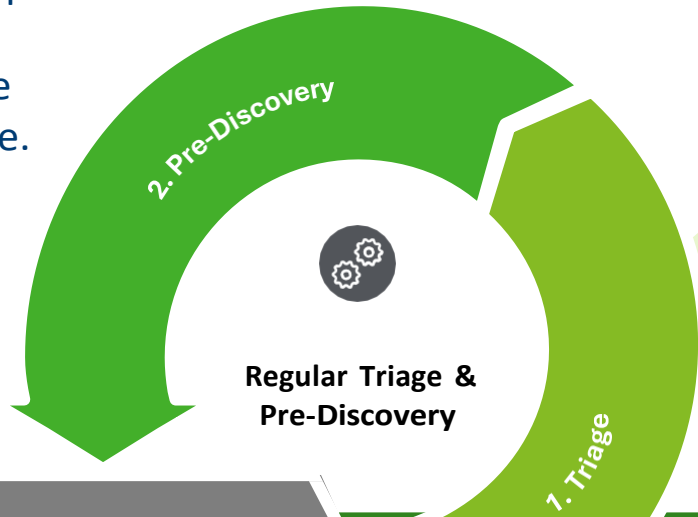
DDaT CC
NDAO, NTB



Embed



DDaT CC
NTB





Next steps:

- We will continue to engage through Chief's Council to ensure that Chief's are represented and have the opportunity to shape & influence
- We will be sharing the annual business plan with you for sign-off
- We will work with senior sponsors to further explore and test the priority use cases to make sure they are deliverable in year one
- We will be consulting with you on options for how Police.AI will interact with and deliver capacity to forces

